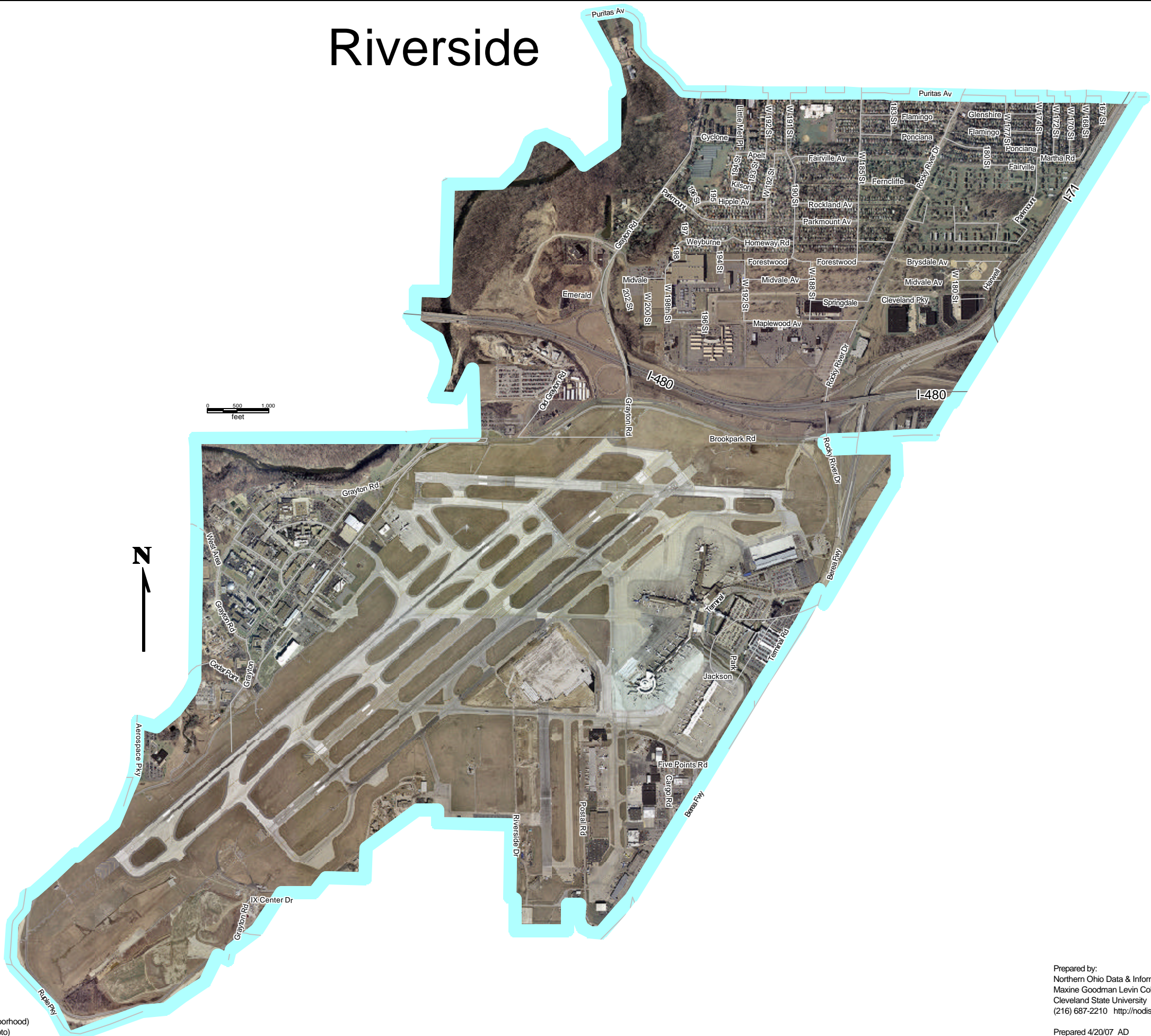
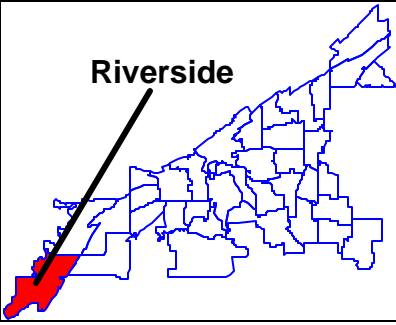


# Riverside



0 500 1,000  
feet



Neighborhood (SPA)

Source:  
Cleveland Planning Commission, 2002 (SPA-Neighborhood)  
Cuyahoga County Engineer's Office, 2006 (Orthophoto)

Prepared by:  
Northern Ohio Data & Information Service (NODIS)  
Maxine Goodman Levin College of Urban Affairs  
Cleveland State University  
(216) 687-2210 <http://nodisnet1.urban.csuohio.edu>

Prepared 4/20/07 AD