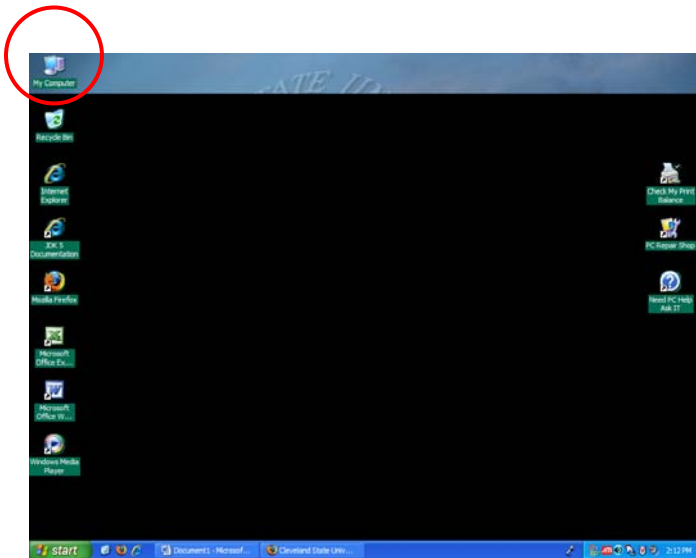


# Spring Semester 2008

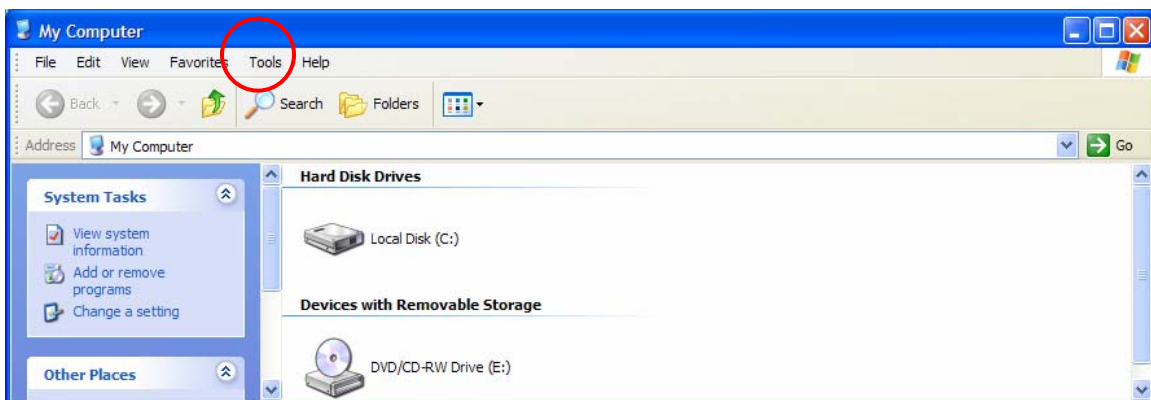
## Urban Affairs Computer Labs, UR 39 & UR 40

Beginning spring semester, 2008, the urban affairs computer labs will be managed by Information Services & Technology. This means a few changes for students using the labs:

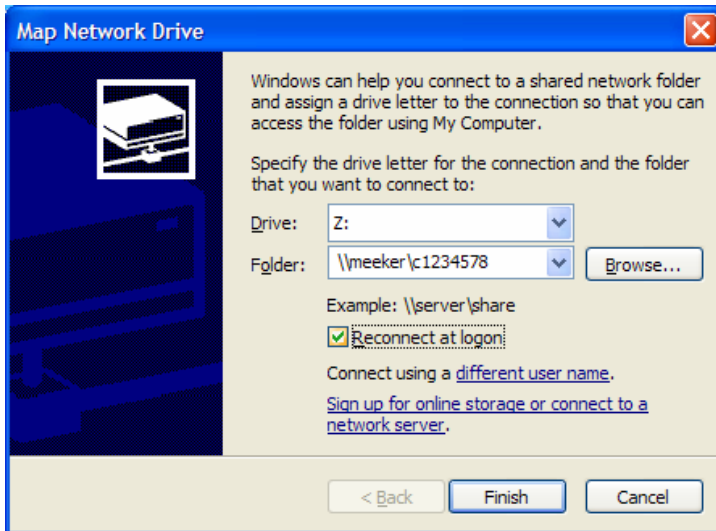
1. Students now use CampusNet ID and passwords to login to machines in the labs.
2. Access to file storage/shared drives is now different. Urban students will now have to map these drives each time they login in order to access. Follow the directions below:



From your desktop, choose “My Computer”



Choose Tools>Map Network Drive



Under Drive, choose the arrow down key to choose the letter name of the drive you want to map – you can choose anything here, for example, “h” for “home”, “p” for “public” “u” for utility, etc.

**To map your home directory as your “h” drive, under “folder” type:**

[\\meeker\your\\_urban\\_login](#)

You will be prompted for your login and password. This is your URBAN login and password, NOT CampusNet.

**To map the public directory (formerly the “P” drive), choose a different drive letter, such as “P” and type:**

[\\meeker\public](#)

You will be prompted for your login and password. This is your URBAN login and password, NOT CampusNet.

**To map the “utility”/faculty directory (formerly the “N” drive), choose a different drive letter, such as “N” and type:**

[\\meeker\utility](#)

You will be prompted for your login and password. This is your URBAN login and password, NOT CampusNet.

---

Drives will be mapped for your working session only. It will be necessary for you to map the drives each time you login to the computer lab.

---

**Remote Access:**

Want to access file storage offsite?

Use a ftp client, such as FileZilla to ftp to your “h” drive:

ftp to:

[your\\_urban\\_login@urban.csuohio.edu](ftp://your_urban_login@urban.csuohio.edu).

You will be prompted for your login and password. This is your URBAN login and password, NOT CampusNet.

-OR-

Use a browser to “get” files (you cannot “put” files or save them to your h drive using ftp via a browser). Point your browser to [ftp://your\\_urban\\_login@urban.csuohio.edu](ftp://your_urban_login@urban.csuohio.edu). You will be prompted for your login and password. This is your URBAN login and password, NOT CampusNet.

---

Questions about file access? Email [c.eucker@csuohio.edu](mailto:c.eucker@csuohio.edu) or [r.martel@csuohio.edu](mailto:r.martel@csuohio.edu)