



Strategic Community Partnership Plan

setting priorities for potential enhancement sites

April 22, 2016



**Northeast Ohio
Regional Sewer District**

**THE
TRUST
FOR
PUBLIC
LAND**



**THE TRUST FOR PUBLIC LAND CREATES PARKS AND
PROTECTS LAND FOR PEOPLE,
ENSURING HEALTHY, LIVABLE COMMUNITIES FOR
GENERATIONS TO COME.**



Land for People Services

▶ **1**

PLAN



▶ **2**

FUND



▶ **3**

PROTECT



▶ **4**

CREATE



▶ **5**

EDUCATE

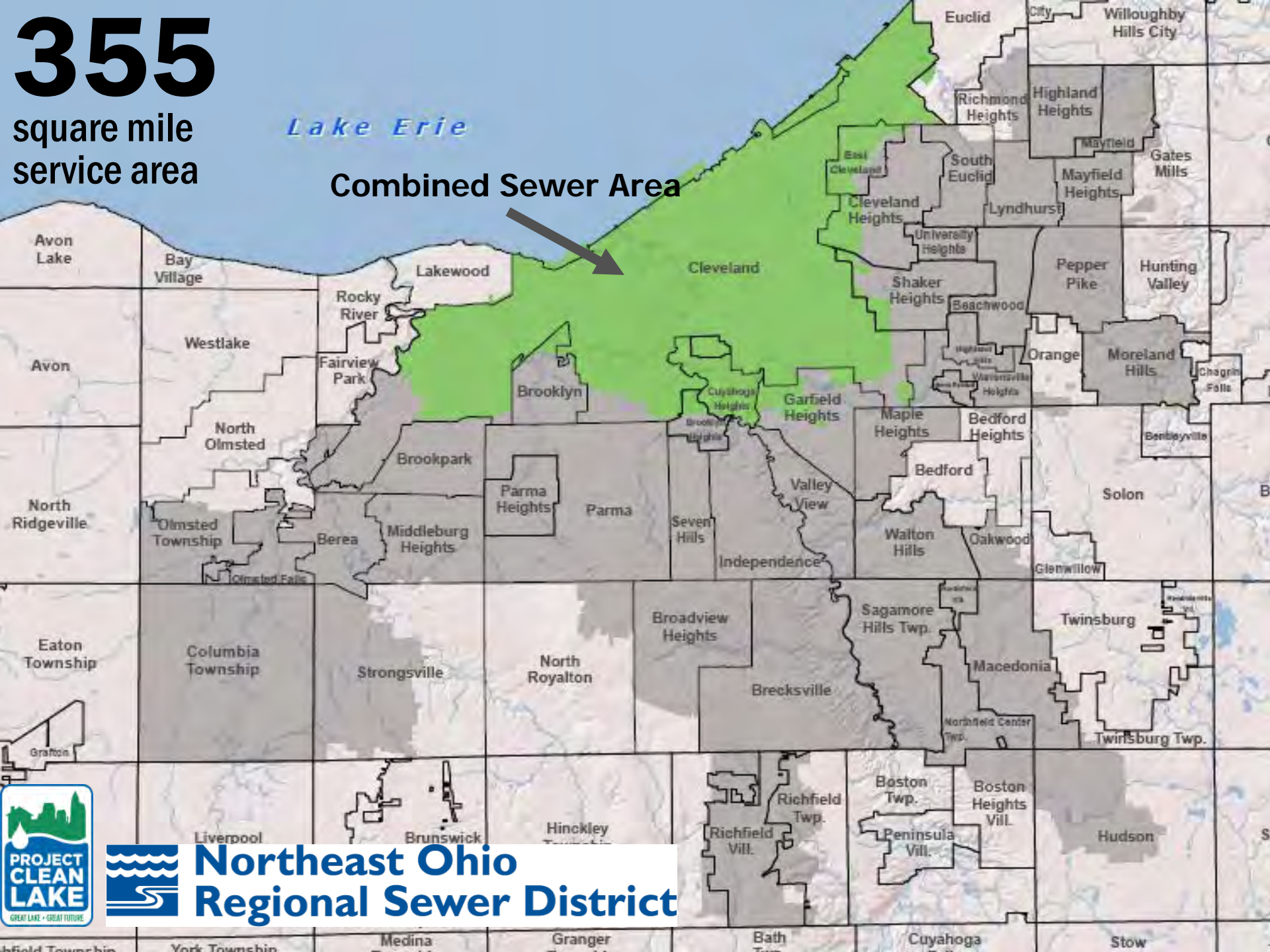


355

square mile
service area

Lake Erie

Combined Sewer Area

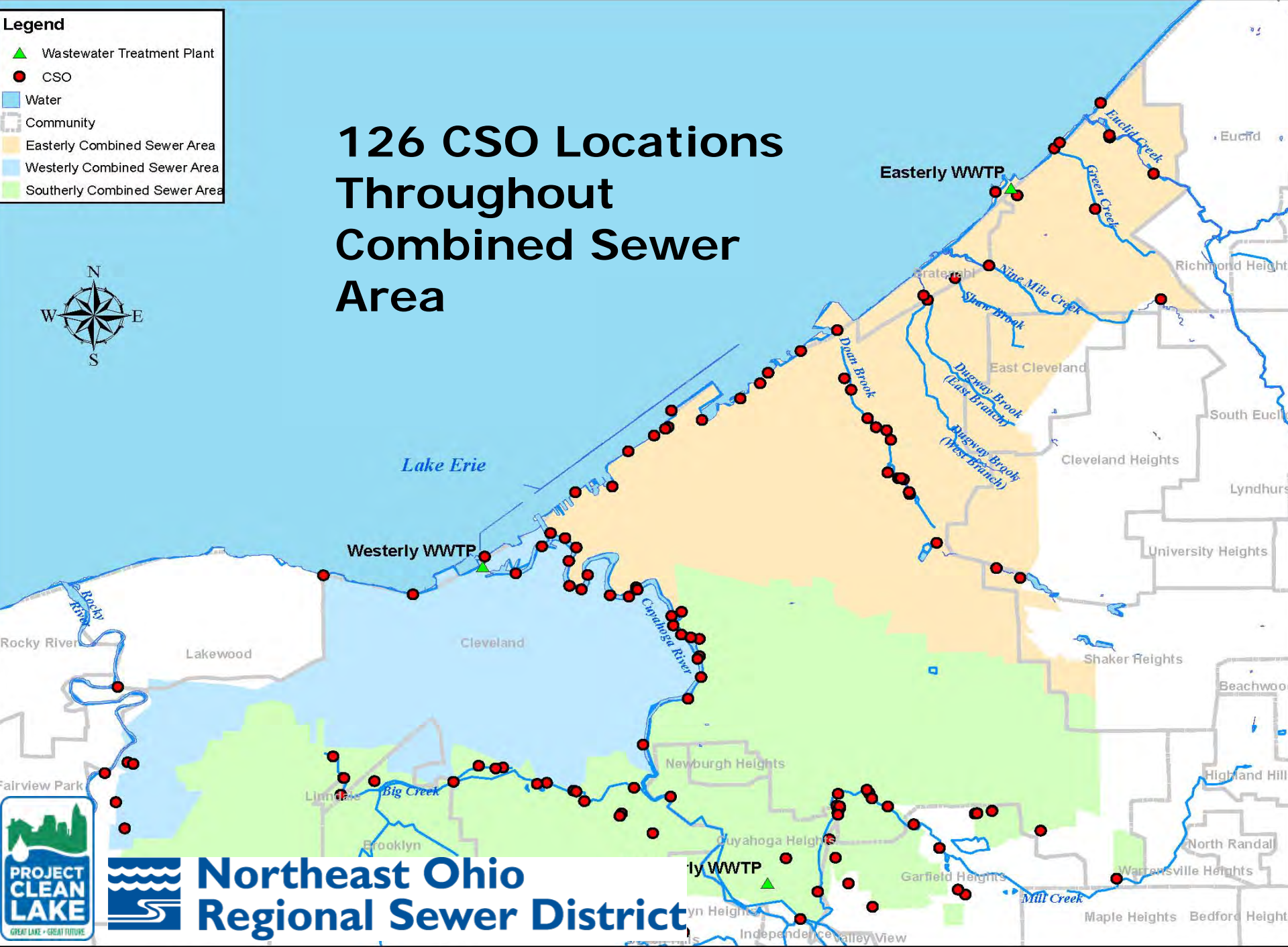


 **Northeast Ohio
Regional Sewer District**

Legend

-  Wastewater Treatment Plant
-  CSO
-  Water
-  Community
-  Easterly Combined Sewer Area
-  Westerly Combined Sewer Area
-  Southerly Combined Sewer Area

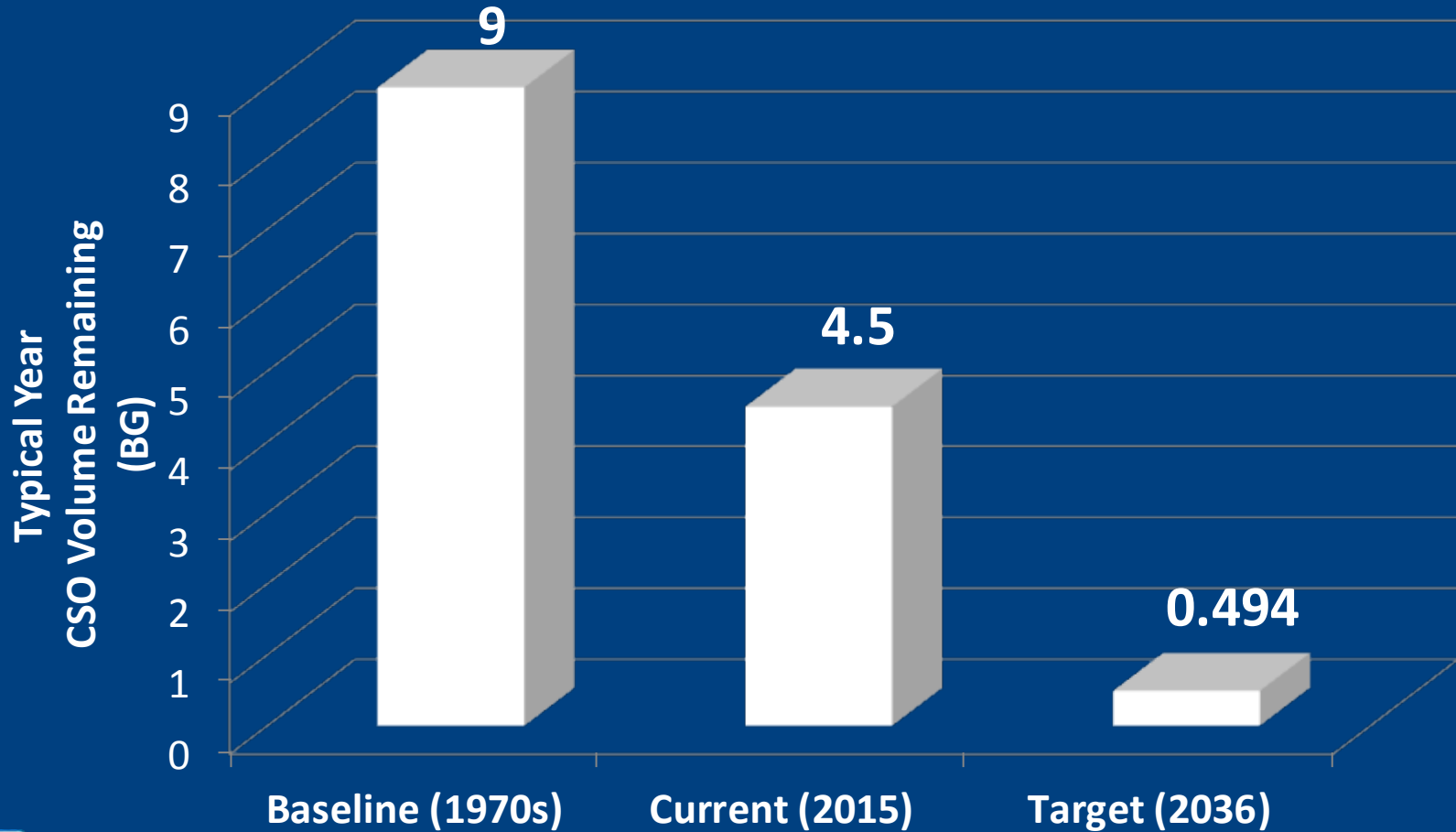
126 CSO Locations Throughout Combined Sewer Area



**Northeast Ohio
Regional Sewer District**



Historical CSO & Consent Decree Requirement



25 years of tunnel construction







7 tunnel systems

- 21 miles
- 17' to 24' diameter
- 100' to 200' deep
- Three deep tunnel pump stations
- Drop structures
- Near-surface sewers, structures



NEORSD Green Infrastructure Project Locations

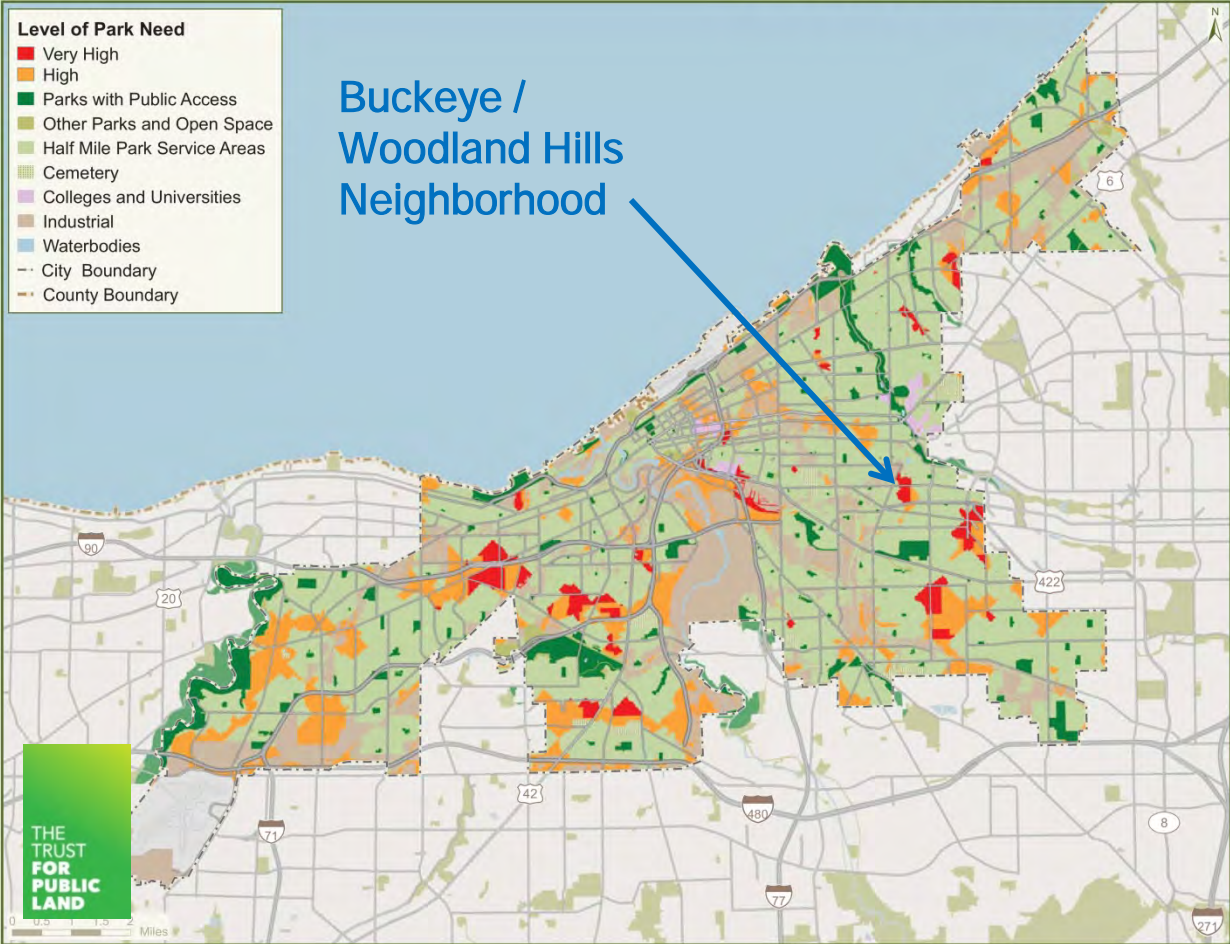
Looking across combined sewer area for opportunities to manage stormwater before it enters combined system

 Green Infrastructure Locations
 Waterways
 0 0.5 1 2 Miles



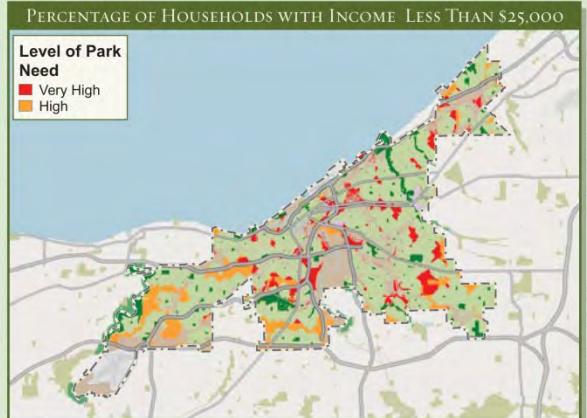
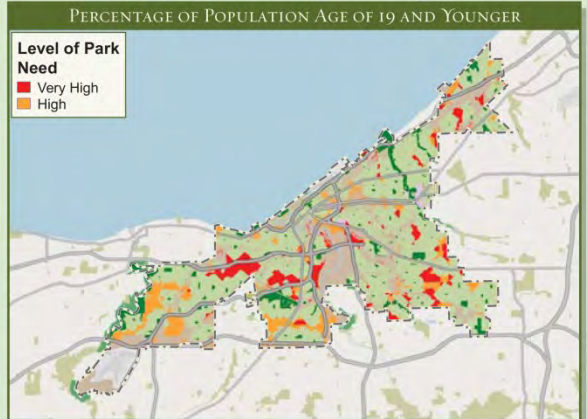
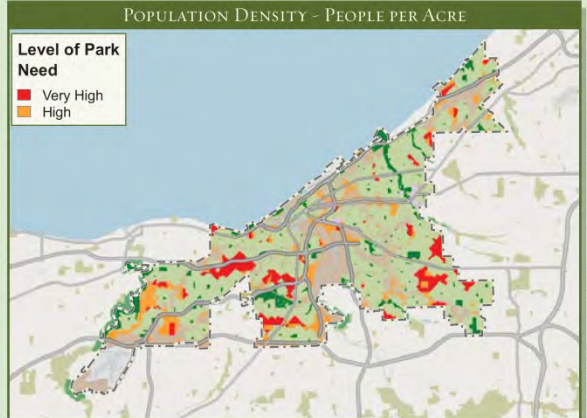


THE TRUST FOR PUBLIC LAND 2013 PARKSCORE® index

CLEVELAND, OHIO



**Buckeye /
Woodland Hills
Neighborhood**



The Trust for Public Land ParkScore® index analyzes public access to existing parks and open space. The analysis incorporates a two-step approach: 1) determines where there are gaps in park availability across the landscape, and 2) constructs a demographic profile to identify gaps with the most urgent need for parkland. Park gaps are based on a service area (walking distance) of a half-mile radius for all parks. In this analysis, service areas are based on the street network to determine walkable distance - streets such as highways, freeways, and interstates are not considered viable means of walkable travel and therefore are considered to be barriers across the landscape.

Demographic profiles are based on 2010 Census block groups to determine park need for percentage of population age of 19 and younger, percentage of households with income less than 75% of city median income (Cleveland less

than \$25,000), and population density (people per acre). Each profile uses the city average for that profile as the baseline for determining high and very high level of need as shown in the three inset maps. High need falls below the baseline, while very high need falls above the baseline. The combined level of park need result shown on the large map takes the three demographic profile results and assigns the following weights:

- 50% = population density (people per acre)
- 25% = percentage of population age of 19 and younger
- 25% = percentage of households with income less than \$25,000

Areas in dark red show a very high need for parks while areas in orange show a high need for parks.

Special thanks to the following data providers: Cleveland City Planning Commission, Cleveland Metroparks, Cuyahoga County Planning Commission, Esri. Information on this map is provided for purposes of discussion and visualization only. Map created by The Trust for Public Land on January 10, 2013. TPL, The Trust for Public Land, and The Trust for Public Land logo are trademarks of The Trust for Public Land. Copyright © 2013 The Trust for Public Land. www.tpl.org



The Sewer District: COMBINED SEWER OVERFLOW CONTROL

Project Clean Lake



Your Sewer District Keeping our Great Lake great.

Community Enhancements

NEORSD Stated Goals for Project Clean Lake Community Enhancements:

- Meet requirements of EPA Consent Decree
- Leave behind investment following construction / disruption
- Develop a coordinated, system-wide approach
- Tell the story of NEORSD investment / impact
- Explore potential to integrate public art and public space enhancements with construction projects
- Create a Project Clean Lake identity
- Environmental education beyond a project's construction

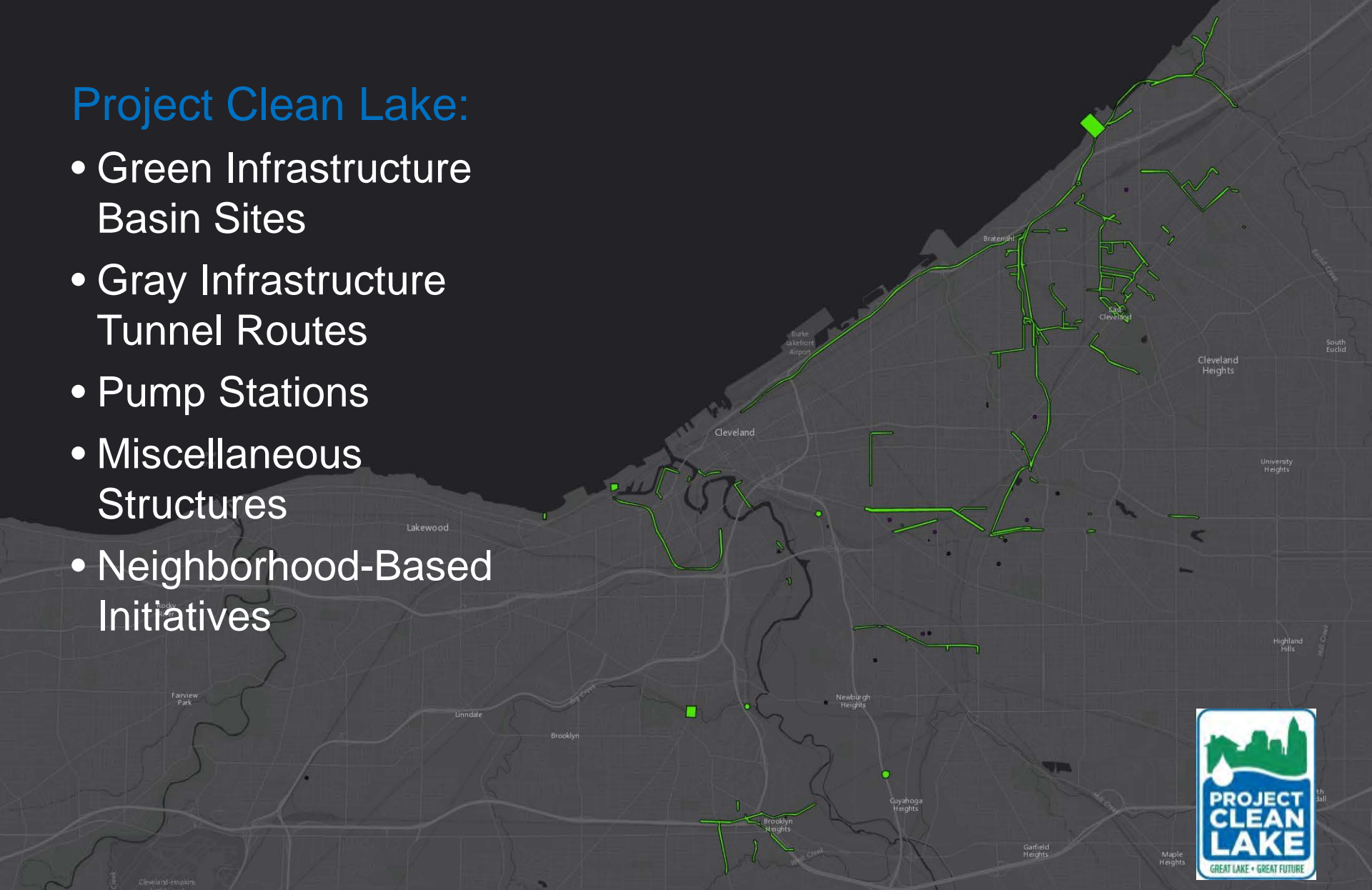


Phase I: Developing an Investment Framework



Project Clean Lake:

- Green Infrastructure Basin Sites
- Gray Infrastructure Tunnel Routes
- Pump Stations
- Miscellaneous Structures
- Neighborhood-Based Initiatives



Planning Horizon: Pre-2026 Projects:

- Buckeye Road GI Basins
- Center Street Storage Tank
- Columbus Road Storage Tank
- CSO-045 Storage Tank
- CSO-063 Relief Consolidation Sewer
- Doan Valley Regulators / Relief
- Doan Valley Relief and Consolidation Sewer
- Doan Valley Storage Tunnel
- Dugway Regulators / Relief Sewer
- Dugway South Relief and Consolidation Sewer
- Dugway Storage Tunnel
- Dugway West Interceptor Relief
- East 140th Consolidation and Relief Sewer & GI Basins
- East 37th Street Pump Station Pipes
- East 37th Street Pump Station Upgrade
- Lakeshore Boulevard Relief Sewer
- Fairhill GI Basin
- Fleet Avenue GI Basin
- Kingsbury Blvd Relief Sewer
- London Road Relief Sewer
- Low Level Interceptor Relief System
- Mary Street Pump Station
- Morgana Run & Burke Brook Rehabilitation
- Morgana Run Relief Sewer
- Regulator S-8 Upgrade
- Shoreline Storage Tunnel
- Shoreline Consolidation
- Slavic Village Demonstration GI Basins
- Southerly Pump Station
- Superior Avenue Pump Station
- UAIZ GI Basins
- Union Avenue GI Basin
- Wade Avenue Connector
- Westerly Main CSO Storage Tunnel
- Westerly Tunnel Dewatering Pump Station
- Woodland Central East / West GI Basins

Planning Horizon: Pre-2026 Projects:

- Buckeye Road GI Basins
- Center Street Storage Tank
- Columbus Road Storage Tank
- CSO-045 Storage Tank
- CSO-063 Relief Consolidation Sewer
- Doan Valley Regulators / Relief
- Doan Valley Relief and Consolidation Sewer
- Doan Valley Storage Tunnel
- Dugway Regulators / Relief Sewer
- Dugway South Relief and Consolidation Sewer
- Dugway Storage Tunnel
- Dugway West Interceptor Relief
- East 140th Consolidation and

Relief Sewer & GI Basins

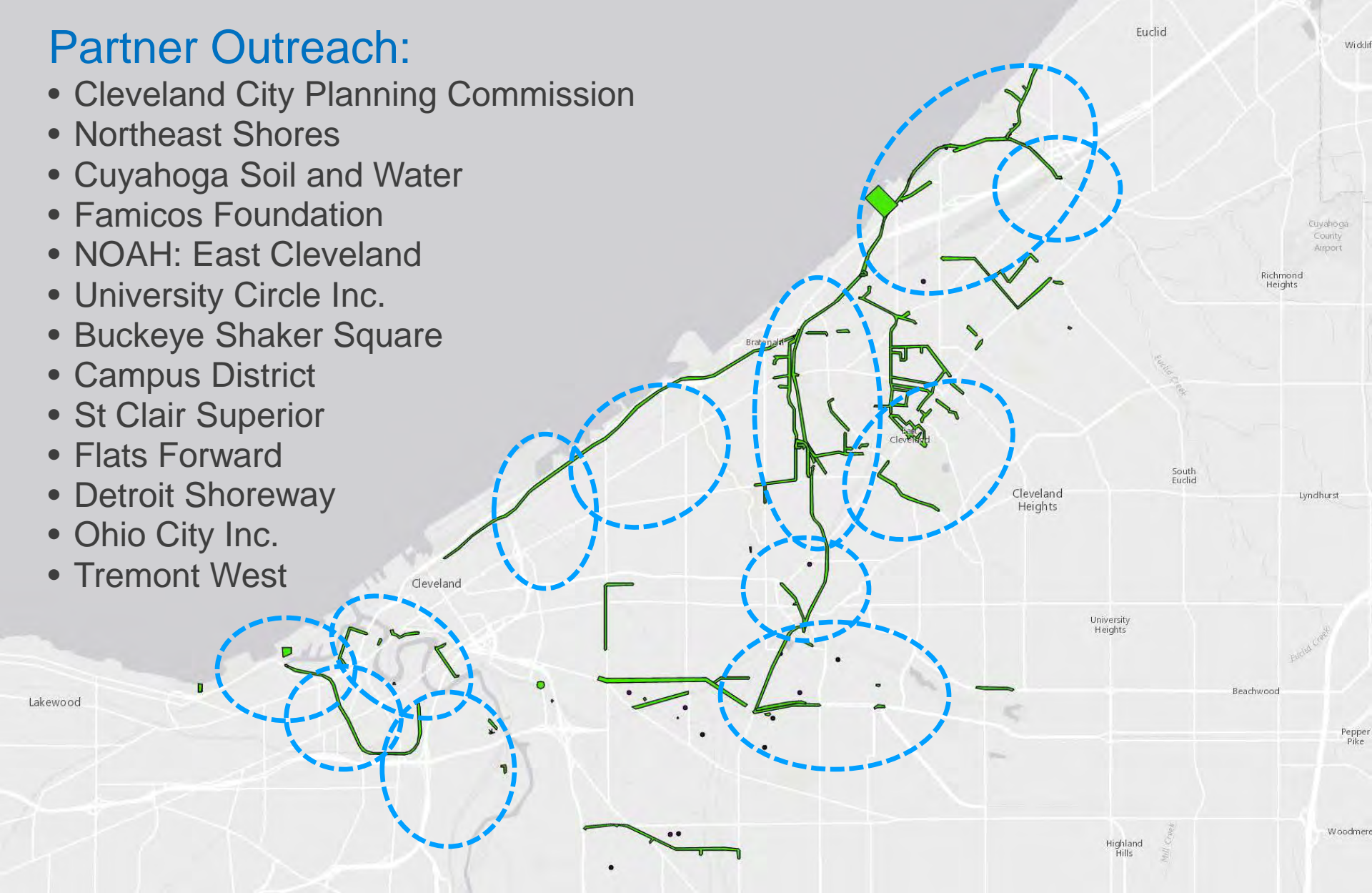
- East 37th Street Pump Station Pipes
- East 37th Street Pump Station Upgrade
- Lakeshore Boulevard Relief Sewer
- Fairhill GI Basin
- Fleet Avenue GI Basin
- Kingsbury Blvd Relief Sewer
- London Road Relief Sewer
- Low Level Interceptor Relief System
- Mary Street Pump Station
- Morgana Run & Burke Brook Rehabilitation
- Morgana Run Relief Sewer

- Regulator S-8 Upgrade
- Shoreline Storage Tunnel
- Shoreline Consolidation
- Slavic Village Demonstration GI Basins
- Southerly Pump Station
- Superior Avenue Pump Station
- UAIZ GI Basins
- Union Avenue GI Basin
- Wade Avenue Connector
- Westerly Main CSO Storage Tunnel
- Westerly Tunnel Dewatering Pump Station
- Woodland Central East / West GI Basins

Establishing a Community Investment Timeline

Partner Outreach:

- Cleveland City Planning Commission
- Northeast Shores
- Cuyahoga Soil and Water
- Famicos Foundation
- NOAH: East Cleveland
- University Circle Inc.
- Buckeye Shaker Square
- Campus District
- St Clair Superior
- Flats Forward
- Detroit Shoreway
- Ohio City Inc.
- Tremont West

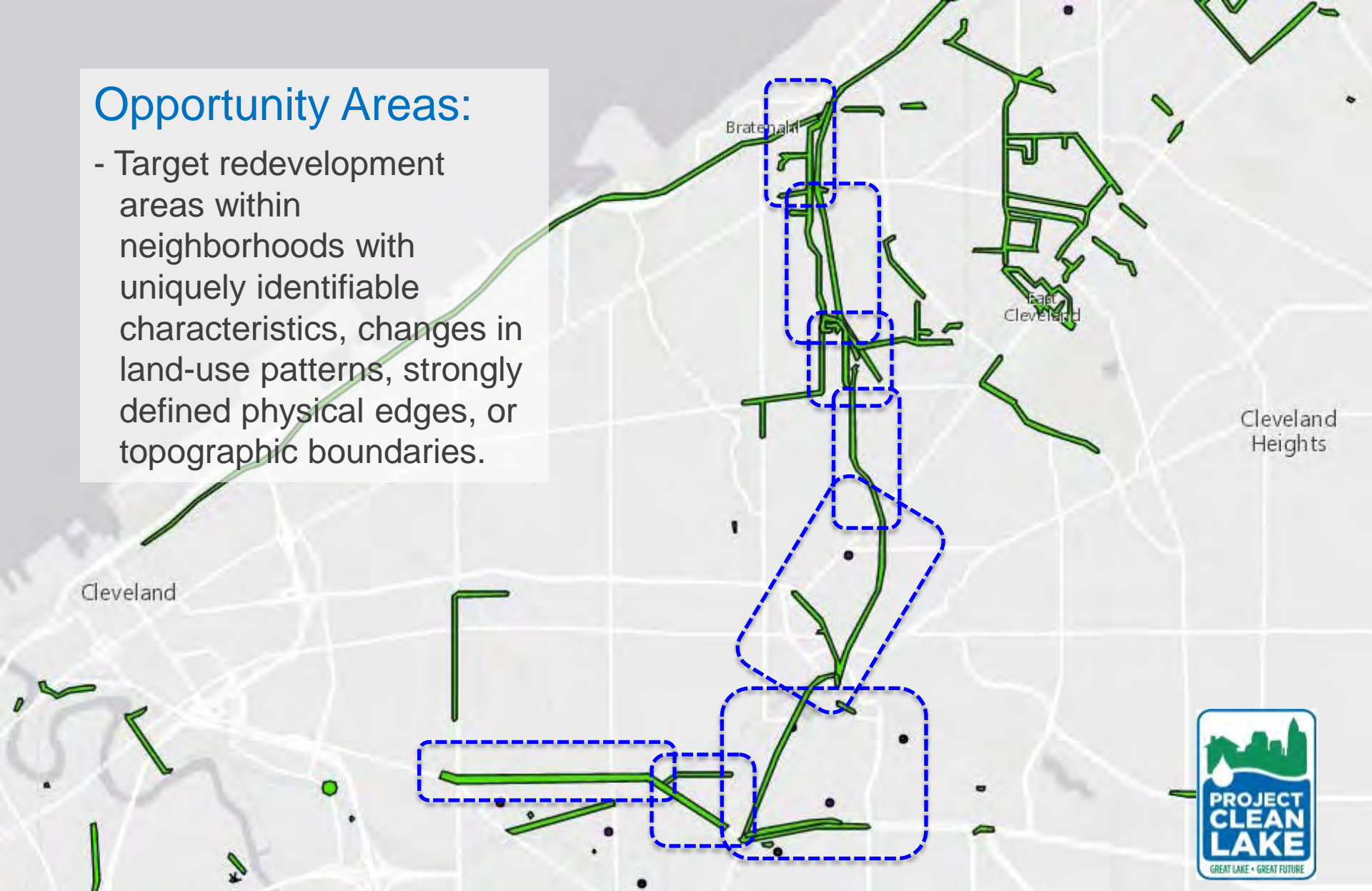


Neighborhood Outreach



Opportunity Areas:

- Target redevelopment areas within neighborhoods with uniquely identifiable characteristics, changes in land-use patterns, strongly defined physical edges, or topographic boundaries.



Opportunity Areas – Criteria for Assessing Impact

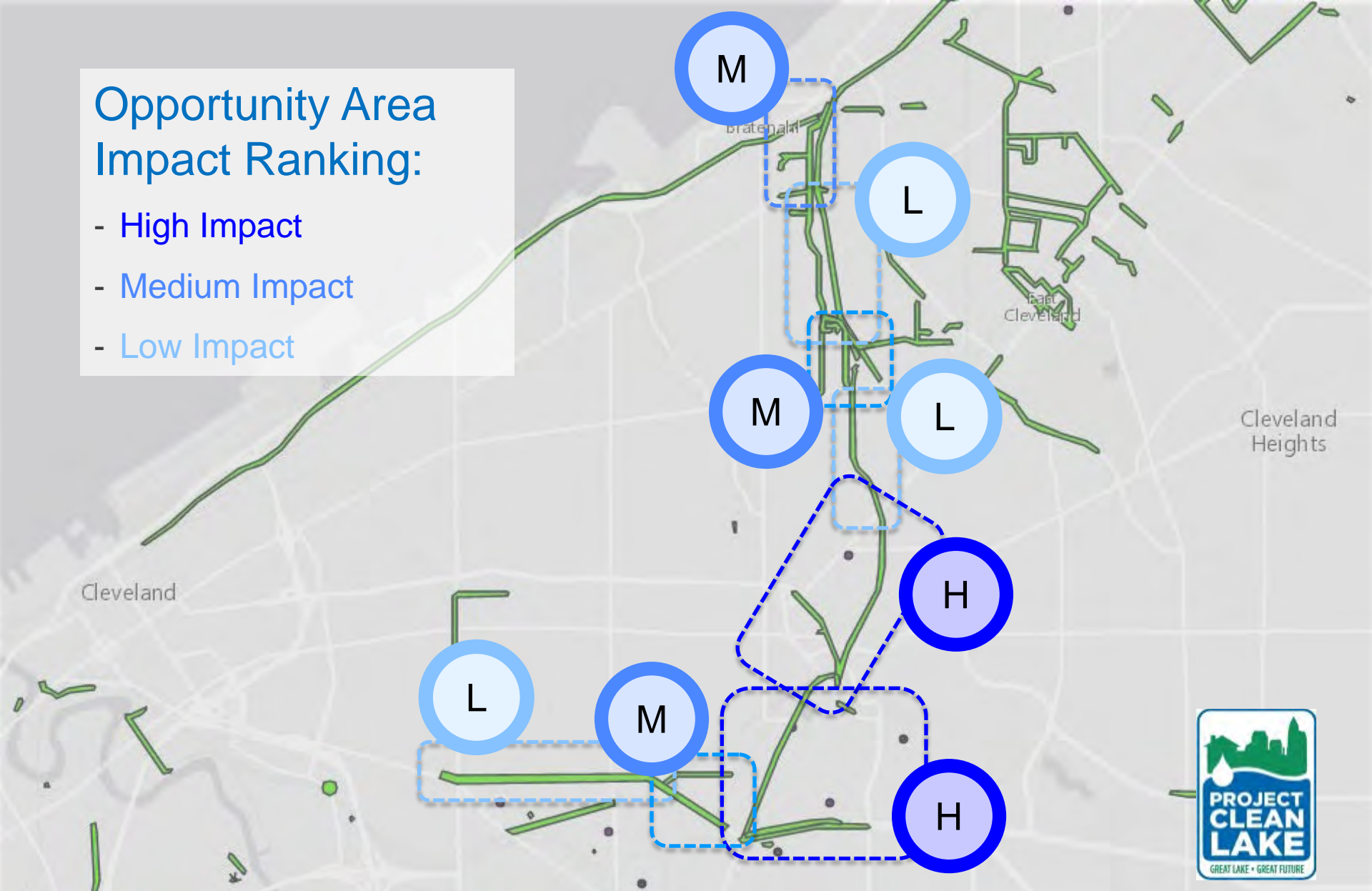
Opportunity Areas are evaluated on a scale of 1-5 for each of the following criteria to assess its viability for NEORSD sponsored public space enhancements:

- **Current Visibility: Automobile**
- **Current Visibility & Accessibility: Pedestrian / Bicycle / RTA station**
- Increased Ped/Bike Visibility: Greenspace & Trails Initiative
- Development Potential
- Population Growth
- Partnership / Funding Opportunities
- Equity / Environmental Justice
- Proximity to Schools



Opportunity Area Impact Ranking:

- High Impact
- Medium Impact
- Low Impact



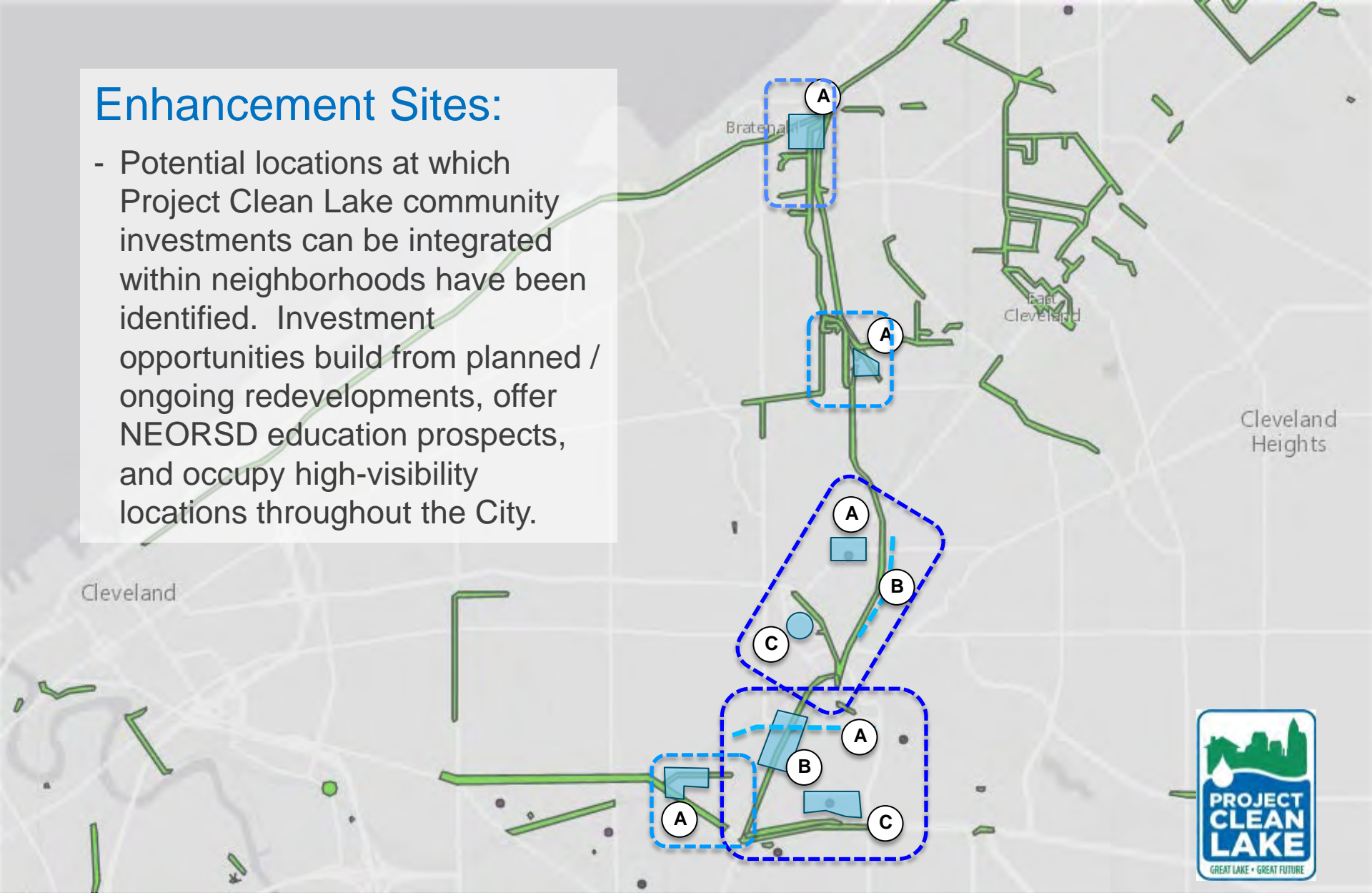
Opportunity Areas – Criteria for Assessing NEORSD Impact



Catalytic Neighborhood Investment Opportunities

Enhancement Sites:

- Potential locations at which Project Clean Lake community investments can be integrated within neighborhoods have been identified. Investment opportunities build from planned / ongoing redevelopments, offer NEORSD education prospects, and occupy high-visibility locations throughout the City.



Catalytic Neighborhood Investment Opportunities



Green Infrastructure



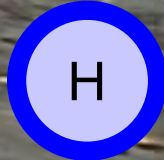
Fleet Avenue Streetscape Infiltration Basin

Green Ambassador Project



Fairhill / Ambler Park Basin

Green Ambassador Project



FAIRHILL ROAD

MLK JR. DRIVE

HUMAN NATURE, INC.

UAIZ Basin Outdoor Classroom

Green Ambassador Project



Gray Infrastructure



Dugway / Doan Initiatives

Opportunity Areas:

Forest Hills

Glenville Neighborhood

East Cleveland

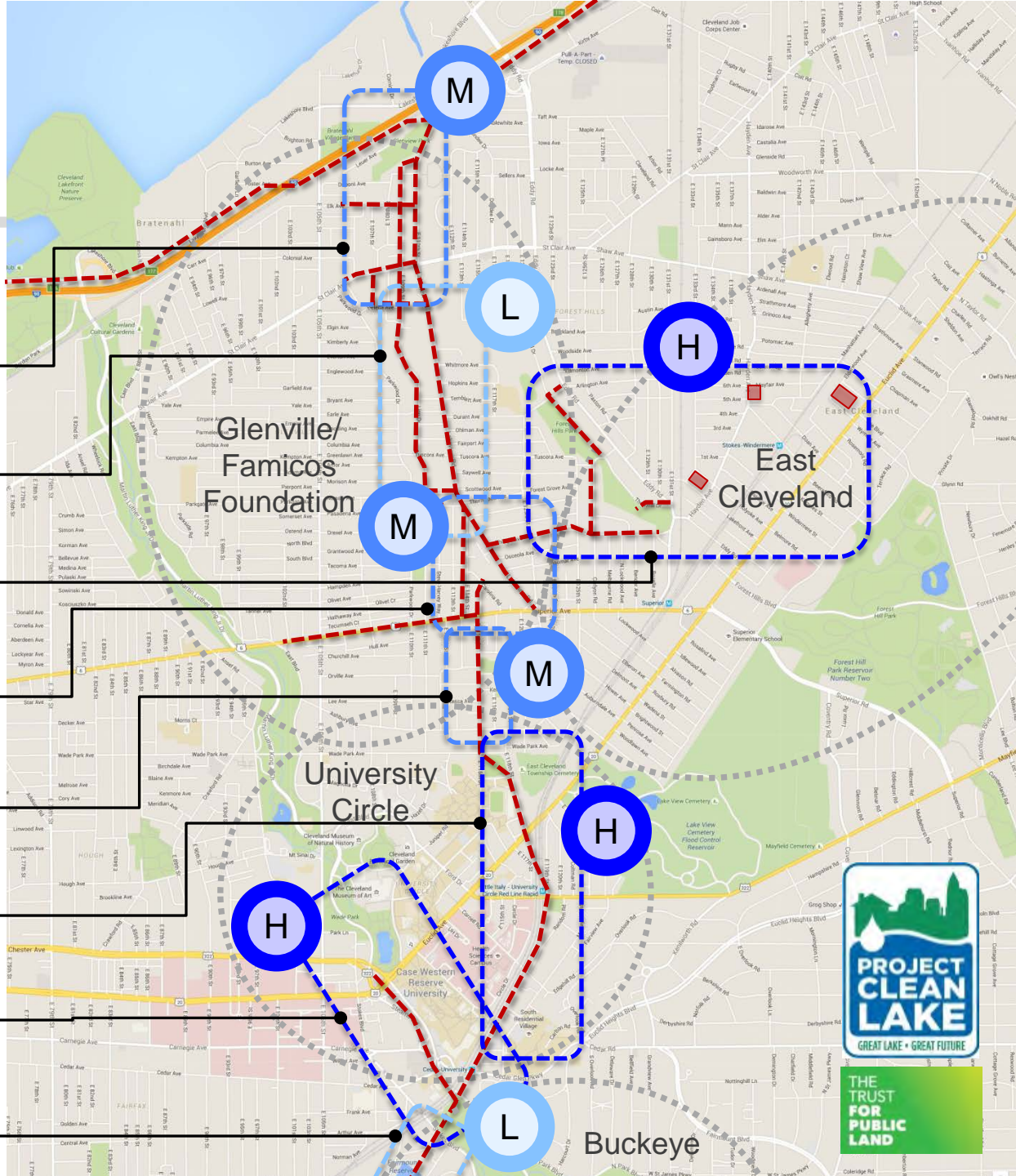
Garrett Square

Heritage Lane

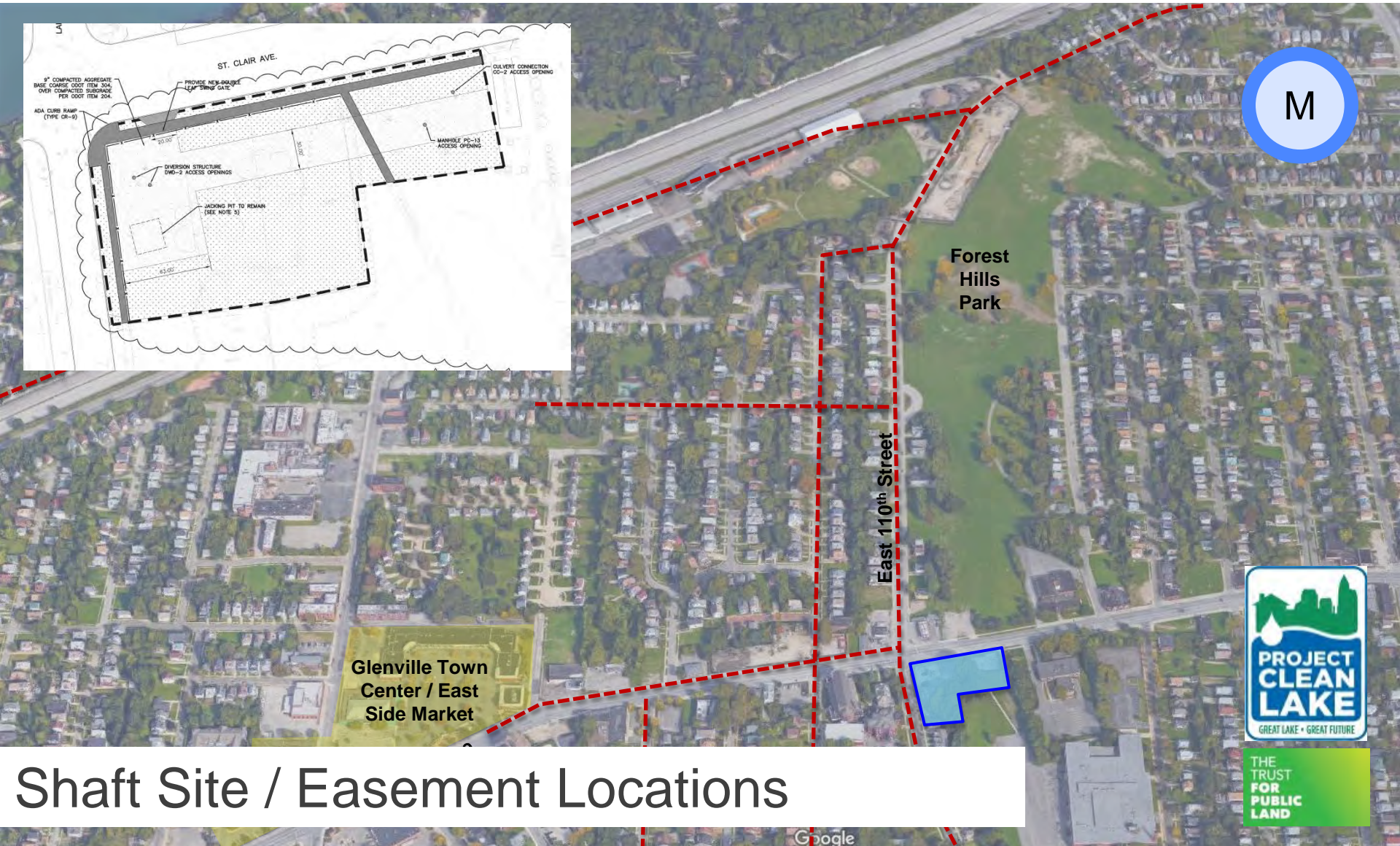
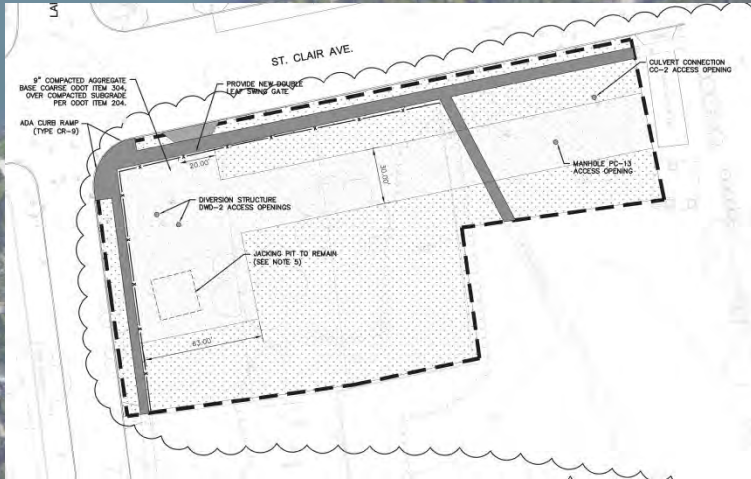
Little Italy / Red Line Route

Stokes / Ambler Park

Woodhill Road



Glenville: Forest Hills Park



Forest Hills Park

East 110th Street

Glenville Town Center / East Side Market



Shaft Site / Easement Locations

Glenville: Garrett Square



Planned Development Initiatives



East Cleveland: Pattison Park



2nd Ave GI Basin

Programming partnerships & community engagement

Pattison Park

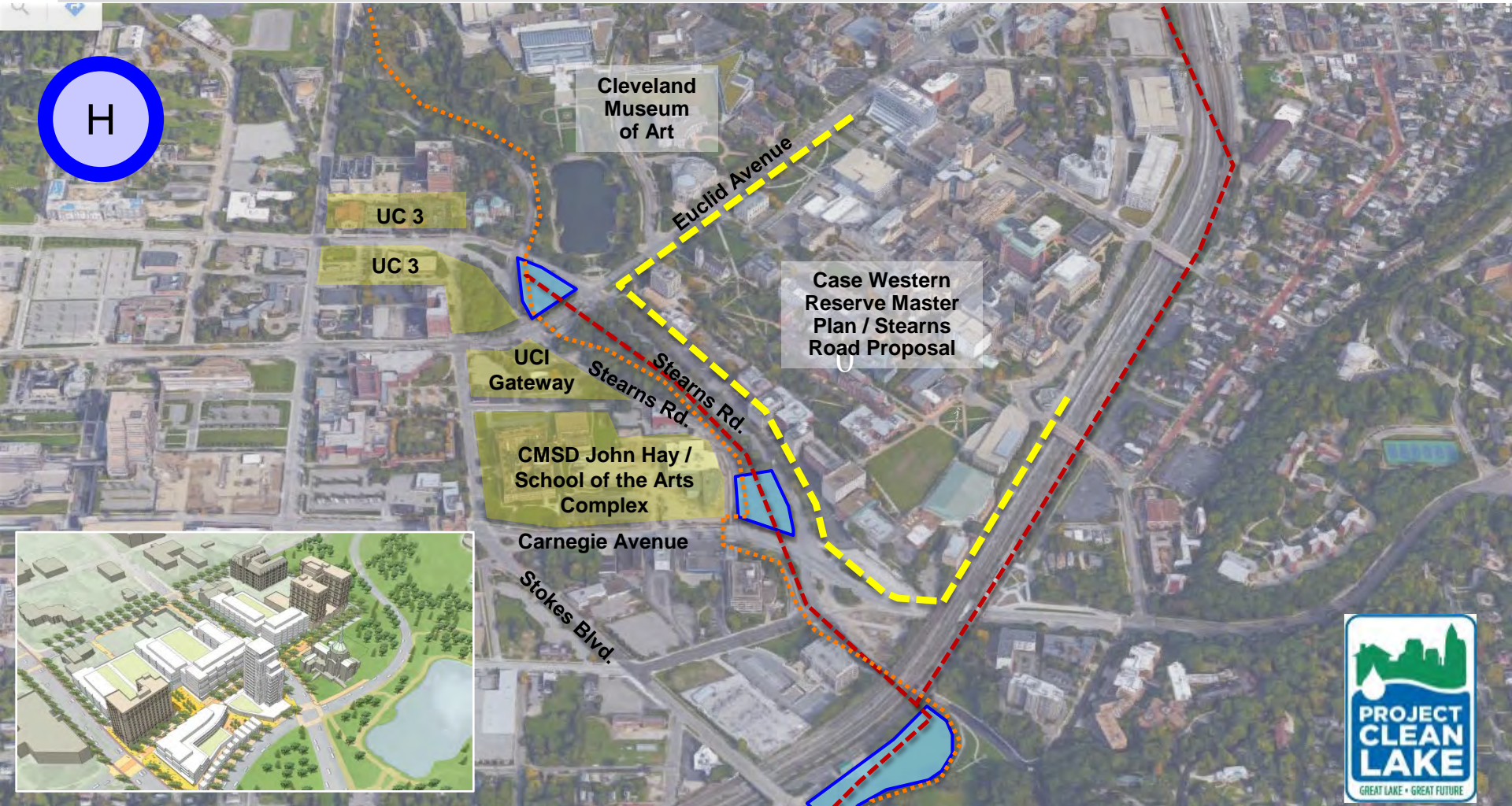
Phillips Avenue

Hayden Avenue



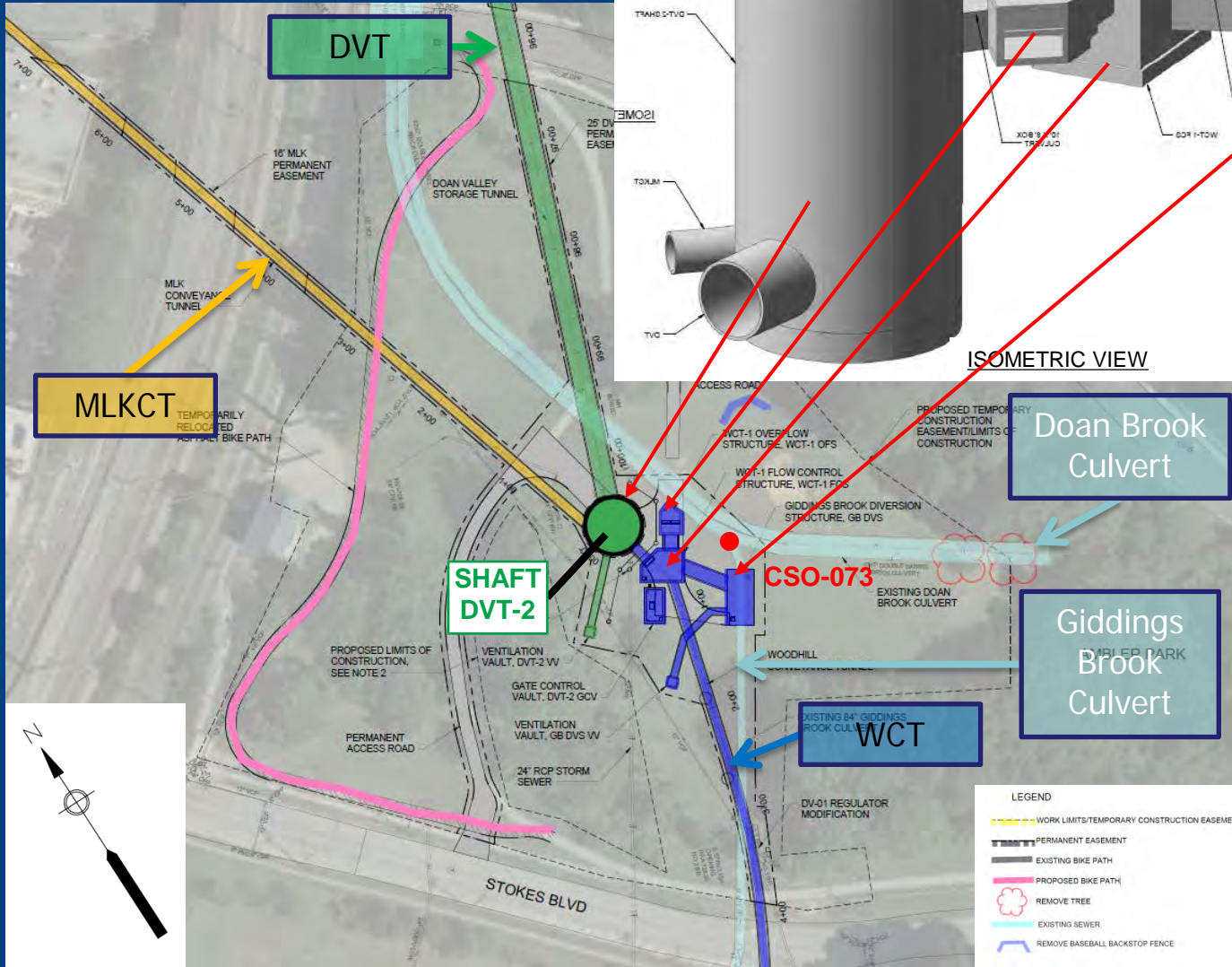
Active / Engaged Communities

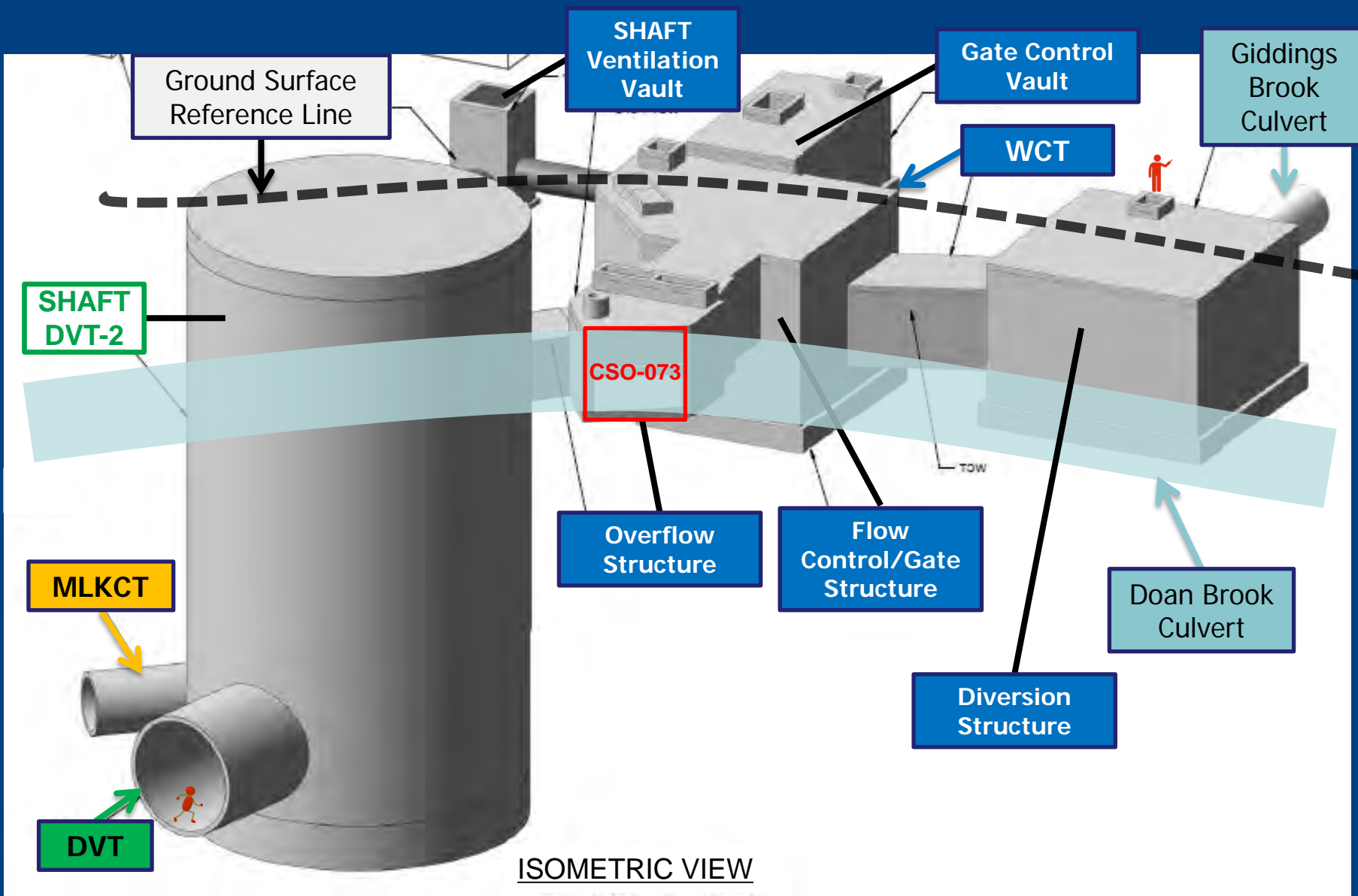
University Circle: Ambler Park



High Visibility Civic Destinations

Below Grade - infrastructure









Project Clean Lake Identity

